



An **Aldata** Company

Is data matching giving  
you a headache?



## CS ProMatch



Data matching can be costly & time consuming.  
CS ProMatch provides the solution.

Not all data providers use the same code structures and descriptions. As a result, organisations spend valuable resources consolidating the data manually before it can be used effectively. CS ProMatch combines powerful matching algorithms with informative views to provide a fast and accurate matching process.

[www.aldata-solution.com](http://www.aldata-solution.com)

[www.cosmic-solutions.com](http://www.cosmic-solutions.com)

# CS ProMatch

## Why use data matching software?

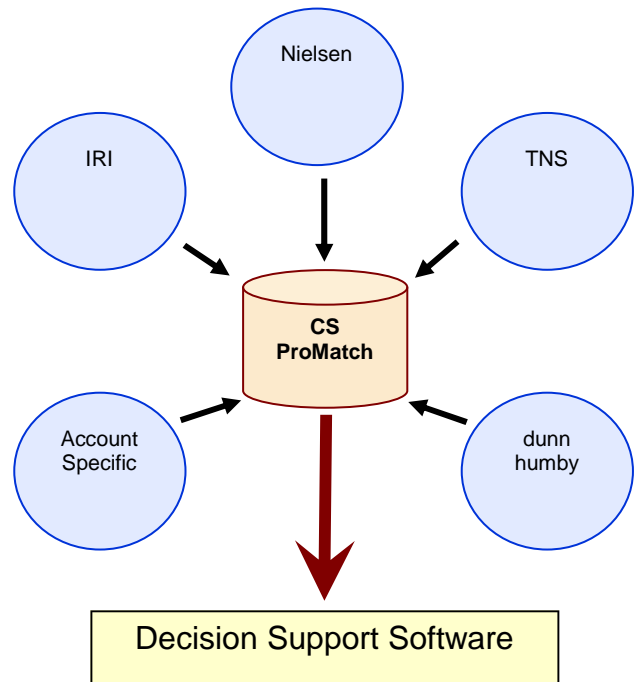
Unfortunately, very few data providers supply data using the same coding structures. Consolidation of data is typically achieved manually and becomes a major headache for organisations wanting to obtain maximum value from the information available. Data matching software can help reduce the amount of time spent preparing the data but our approach is different. We combine the strength of the user with powerful matching algorithms to provide a fast and efficient process.

## ..and the benefits?

By using CS ProMatch, time traditionally allocated to preparing the data for analysis can be substantially reduced and instead, more time devoted to the analysis. In addition, the consolidation process is far more efficient and accurate ensuring that the correct decisions can be made.

## Why CS ProMatch?

Using a combination of intelligent matching algorithms and informative views of the data, proposed matches can be quickly confirmed. Furthermore, easy to use manipulation functions enable the small number of mis-matches to be efficiently resolved.



## CS ProMatch reduces data preparation time

### Application Areas

- > Data Consolidation
- > Produce Cross Reference Files
- > Identify Record Duplication



### Benefits

- > Easy to use
- > Significantly reduces data preparation / validation time
- > Increases data accuracy
- > Integrates data from multiple data sources to give complete business view
- > Reduces project overheads

### Features

- > Fast, powerful memory resident matching process
- > Intuitive user interface enabling issues to be resolved
- > Merge files from many sources simultaneously
- > Generate cross reference files for other systems
- > 'One to one' and 'many to one' matching
- > Iterative matching process
- > Define custom templates for common export formats
- > Definable Thesaurus
- > Multiple data views

More time for **analysis** leading to increased **sales** and higher **profits**



An Aldata Company

Tel: + 44 (0) 1476 570500

[www.cosmic-solutions.com](http://www.cosmic-solutions.com)

Email: [cosmic@aldata-solution.com](mailto:cosmic@aldata-solution.com) Fax: + 44 (0) 1476 568500

Aldata Cosmic, 6 Hill Court, Swingbridge Road, Grantham, Lincolnshire NG31 7XY United Kingdom

